

MODULAR ISLAND UTILITY COUNTERS



Item # _____ Quantity _____

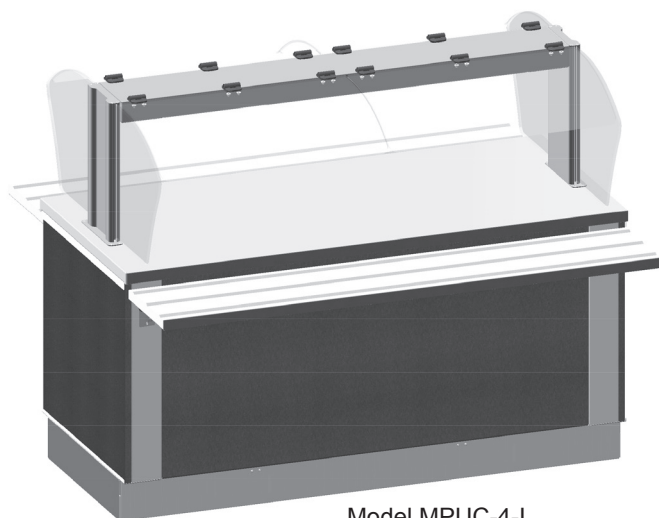
Project _____

MODELS

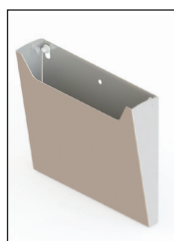
- ☐ MPUC-2-I ☐ MPUC-3-I ☐ MPUC-4-I
☐ MPUC-5-I ☐ MPUC-6-I

M-POWER™ Series

- ▶ Durable all-welded stainless steel rigid frame
- ▶ Attractive, lightweight **M-POWER** food guard for dual-sided self-service
- ▶ Lightweight, easy mobility with 30" width for doorway passage
- ▶ Heavy duty 14-gauge stainless steel countertop
- ▶ Interchangeable stainless steel or optional laminate exterior panels match or complement any décor
- ▶ Stainless steel or optional laminate hinged doors on access side
- ▶ 8' power cord with plug
- ▶ 6" heavy-duty swivel casters, 2 ea. with brake
- ▶ Optional fold-down 12" stainless steel 'V' ridge tray slides, removable without tools, are available
- ▶ Optional powder coated toe plates, hinged for easy access, available in a variety of colors
- ▶ Optional patented **TIGHT LINK™** interlocking mechanism eliminates vertical and horizontal gaps between counters is available
- ▶ Available in 48" to 94" long models



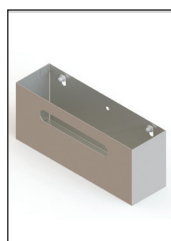
Model MPUC-4-I
Shown with optional toe plates and optional tray slides.



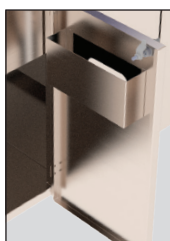
Optional Document Holder



Optional Paper Towel Dispenser



Optional Spray Bottle Holder



Optional Glove Box Holder/Dispenser



OPTIONS & ACCESSORIES

Food Guard

- ☐ LED light
☐ Heat strip
☐ Special color frame epoxy finish (black is standard)

Specify _____

Tray Slides (Optional)

- ☐ 2" below counter ☐ 4" below counter ☐ None

Counter Height

- ☐ 34" high ☐ 32" high

Inset Base Panel(s)

- ☐ Stainless steel (standard) ☐ 3/4" Laminated MDO board
☐ Graphic design Specify P-lam _____

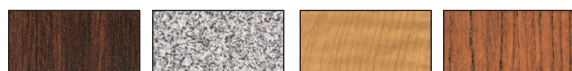
Hinged Doors With Locks

- ☐ Stainless steel (when stainless panel finish is ordered)
☐ 3/4" laminated MDO board (to match laminate panel finish)

Other Options/Accessories

- ☐ Epoxy finish toe plate (to match food guard frame)
☐ Stainless steel toe plate
☐ TIGHT LINK interlocking mechanism
☐ Stainless steel spray bottle holder in door
☐ Stainless steel paper towel holder/dispenser in door
☐ Stainless steel document holder in door
☐ Stainless steel glove box holder/dispenser in door

Standard Laminated Panel Finishes



- ☐ Walnut ☐ Gray Sand ☐ Light Maple ☐ Victorian Cherry



- ☐ Beige Suede ☐ Hard Rock Maple ☐ Red Maple ☐ Black



- ☐ Red ☐ Green ☐ Royal Blue ☐ Purple

Other Plastic Laminate Finishes Available

☐ Specify _____

MULTITERIA • 4900 W. ELECTRIC AVENUE • WEST MILWAUKEE, WI 53219

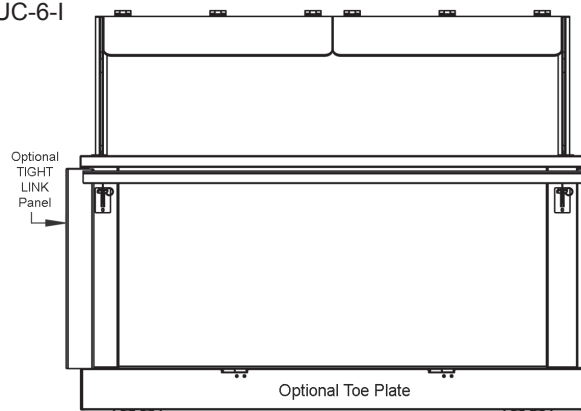
OFFICE: 414.902.6400 • FAX: 414.902.6446 • INFO@MULTITERIAUSA.COM • WWW.MULTITERIAUSA.COM

MODELS

MPUC-2-I
MPUC-3-I
MPUC-4-I
MPUC-5-I
MPUC-6-I

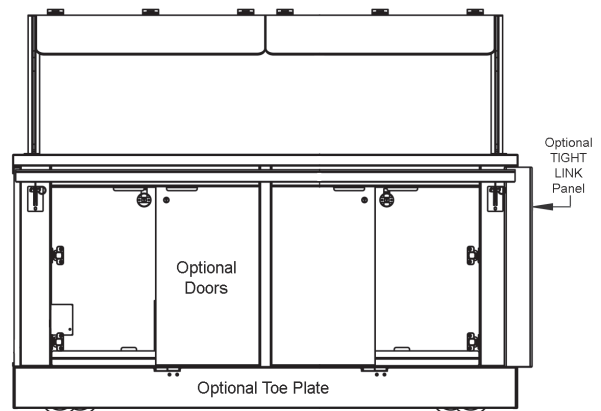
MODULAR ISLAND UTILITY COUNTERS

M-POWER™ Series

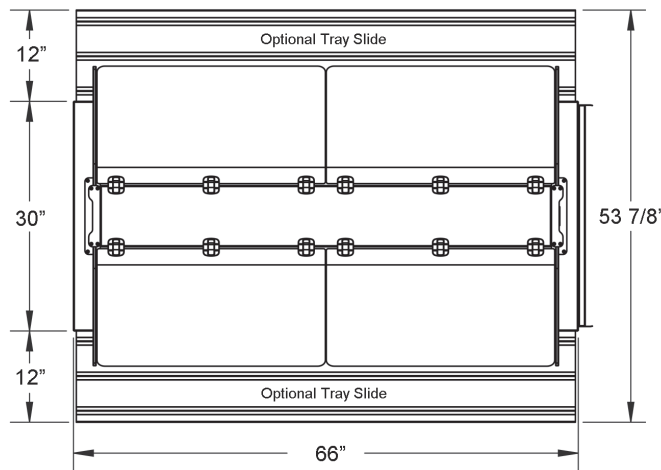


Front View ▲

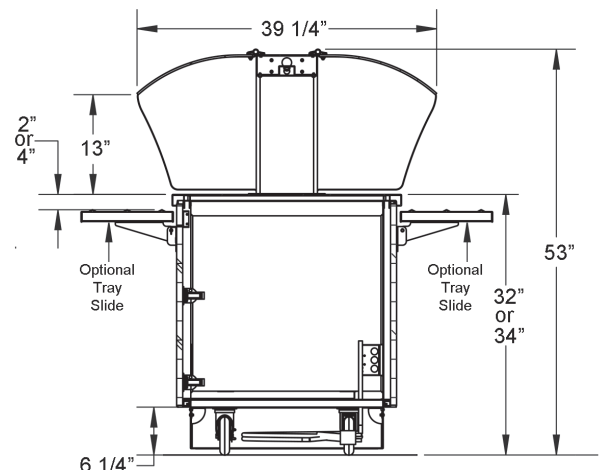
Model MPUC-4-I



Access Side View ▲

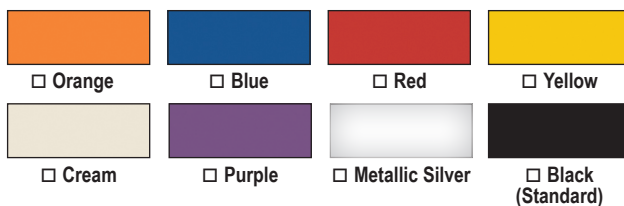


Plan View ▲



End View ▲

Available Food Guard/Kick Plate Colors



MODEL DETAILS

Model	Counter Length	Ship Wt. (Lbs.)
MPUC-2-I	48"	300
MPUC-3-I	54"	325
MPUC-4-I	66"	380
MPUC-5-I	80"	435
MPUC-6-I	94"	515

SPECIFICATIONS

General:

Provide Multiteria Model MPUC-____-I, to be constructed with heavy-duty all-welded stainless steel rigid frame. Countertop to be manufactured with 14-gauge stainless steel with 1½" top turndown. All welds to be ground and polished to provide #4 finish. Counter to have easily removable stainless steel front/end panels. Fold-down 12" wide stainless steel tray slides (optional) are full-length with triple 'V' ridge top surface, and are removable without tools. UL listed electrical and sanitation.

Body Frame:

Core and shell is 100% stainless steel structural channel supports, all TIG welded in place, no rivets or fasteners. Body frame is designed to accept optional TIGHT LINK™ (patented) fastening system for multiple counters. Base to be furnished with removable stainless steel undershelf. Undershelf depth to allow 4" clear open space for mechanical connections during installation. Unit has four ea. 6" heavy-duty swivel casters, two ea. with brake.

Front & End Panels:

All stainless steel panels are to be 18-gauge. Optional millwork panels are ¾" thick with standard plastic laminate on front and white laminate interior. Panels shall be removable for service access. Millwork end panels shall be removable without tools.

Food Guard:

Designed for double-sided self-service and includes curved acrylic panels hinged to a powder coated (black color standard) center frame. Hinged acrylic panels lift for easy cleaning access.

Optional TIGHT LINK™ System

Patented system features slide-in panels that link adjacent counters together their entire depth and height to eliminate top, front and rear horizontal and vertical gaps between equipment. Linking panels are open to allow mechanical connections to run through adjoining counters without having to cut access holes, reducing the number of building mechanicals required to connect equipment.

Limited Warranty:

Core and shell has a lifetime warranty against weld or structural support failure.



MULTITERIA • 4900 W. ELECTRIC AVENUE • WEST MILWAUKEE, WI 53219

OFFICE: 414.902.6400 • FAX: 414.902.6446 • INFO@MULTITERIAUSA.COM • WWW.MULTITERIAUSA.COM