

MODULAR COOKING EQUIPMENT COUNTER

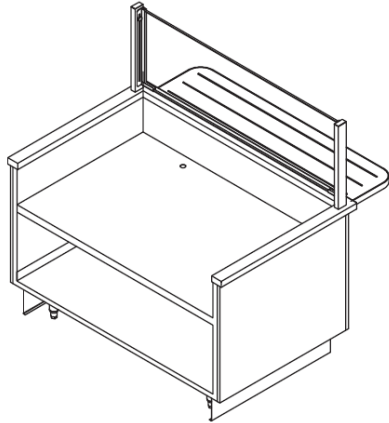


Item #: _____ Quantity: _____

Project: _____

Essence™ Series

Create a custom look with unique interlocking modules



Shown with optional food shield, toe base and tray slide .

OPTIONS & ACCESSORIES

MODELS

- | | | |
|---------------------------------------|---------------------------------------|---------------------------------------|
| <input type="checkbox"/> FGS30 | <input type="checkbox"/> FGS54 | <input type="checkbox"/> FGS78 |
| <input type="checkbox"/> FGS36 | <input type="checkbox"/> FGS60 | <input type="checkbox"/> FGS84 |
| <input type="checkbox"/> FGS42 | <input type="checkbox"/> FGS66 | <input type="checkbox"/> FGS90 |
| <input type="checkbox"/> FGS48 | <input type="checkbox"/> FGS72 | <input type="checkbox"/> FGS96 |

Counter Heights

- 34" high (standard)
- Available between 30" to 36"
specify height: _____

Service Type

- Operator service

Countertop Material

- 14-gauge 300 series stainless steel (standard)
- Zodiaq® quartz
- Corian® solid surface
- Green 100% recycled composite
- Laminate
- Common tops available up to 18'-0"
(consult factory)

Exterior Panels

- Laminate panels (standard)
specify mfg./color
- Stainless steel panels
- Custom decorative laminate
(contact factory)

Tray Slide Options

- "V" ridge stainless steel
- Flat stainless steel
- Laminate with plastic runners
- Zodiaq® quartz
- Corian® solid surface
- Stainless steel runners
- Continuous top extension (in lieu of tray rails)
- Green 100% recycled composite with
stainless steel runners

Kickplate & Casters

- 6" adjustable stainless steel legs (standard)
- 5" casters
- 6" adjustable height NSF casters
- Black powder coated kickplate
- Stainless kickplate

Food Protector Style

- FS (Standard)
- VG Captur™
- M
- Other (Specify) _____

Food Protector Options

- Black powder coat finish (standard)
- Stainless steel
- Other powder coat finish
(verify) R.A.L. color _____

Operator Work Ledge

- White poly carving board on fixed brackets
- White poly carving board with fold-down
brackets
- Stainless steel 8" work ledge with
fold-down brackets

Under Counter Options

- Hinged doors (standard)
- Removable under-shelf
- Stainless steel storage compartment
- Pan slides
- Locks (for hinged doors)
- Heated base
- Refrigerated base

Signage Package

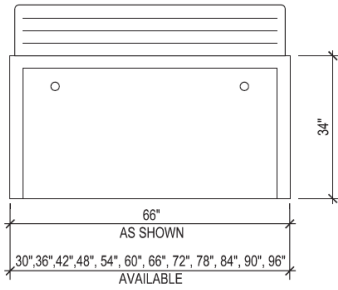
- Counter mounted
- Floor model
- Ceiling/wall mounted
- Other: _____
(consult factory for sign options)

- ▶ **12 standard sizes available**
- ▶ **TIGHT LINK™ (patented)** interlocking mechanism eliminates vertical and horizontal gaps between counters.
- ▶ Durable, welded, 300 series stainless steel tubular frame.
- ▶ Interchangeable exterior panels match or complement any décor.
- ▶ Common tops available up to 18'-0".
- ▶ Interchangeable top configurations available.

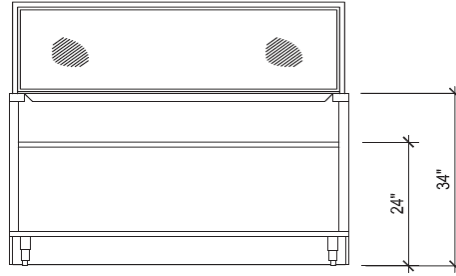
MODULAR COOKING EQUIPMENT COUNTER



Item #: _____

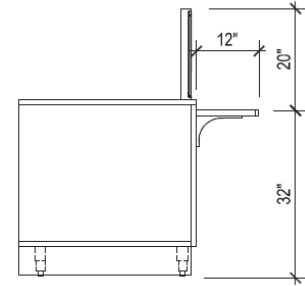


Plan View ▲



Shown with optional food shield, toe base and tray slide .

Elevation View ▲



End View ▲

Model	Dimensions L x W x H	Electrical Requirements	Plumbing Requirements
FGS30	30"x34"x34"	N/A	N/A
FGS36	36"x34"x34"	N/A	N/A
FGS42	42"x34"x34"	N/A	N/A
FGS48	48"x34"x34"	N/A	N/A
FGS54	54"x34"x34"	N/A	N/A
FGS60	60"x34"x34"	N/A	N/A
FGS66	66"x34"x34"	N/A	N/A
FGS72	72"x34"x34"	N/A	N/A
FGS78	78"x34"x34"	N/A	N/A
FGS84	84"x34"x34"	N/A	N/A
FGS90	90"x34"x34"	N/A	N/A
FGS96	96"x34"x34"	N/A	N/A

Mechanical requirements may change depending on options chosen.

Specifications: Short Form

Provide Multiteria model #FGS_____ to be constructed with heavy-duty welded stainless steel tubular frame. Countertop to be manufactured with 14-gauge, 300 series stainless steel with 1-1/2" top turndown all welds to be ground and polished to provide #4 finish. Counter to have easily removable 3/4" laminated front and end panels. All millwork panels to have standard plastic laminate on front and white laminate interior.

Specifications: Detailed

Body Frame: Body to be welded and polished, 1" stainless steel tubular framework. Body frame made to readily accept 3/4" laminated panels to allow panel changing without the use of tools. Body frame made to accept TIGHT LINK™ (patented) fastening system. Base to be furnished with removable stainless steel undershelf. Undershelf depth to allow 4" clear open space for mechanical connections during installation. Unit shall rest on 6" high stainless steel legs with stainless steel adjustable feet or casters.

Front & End Décor panels: All millwork panels to have standard plastic laminate on front and white laminate interior. Panels shall be removable for access for service. Millwork end panels shall be removable without the use of tools. Door handle to be satin chrome finish.

Countertop: Top shall be 14-gauge, 300 series stainless steel with 1-1/2" top turndown, and shall be removable to allow for service. Top shall include stainless steel support channels and shall be constructed to accommodate remodeling of the counter at a later date to accept an alternate material top without changing the work height.

TIGHT LINK™ (patented)

Furnish with linking system that links adjacent counters together the entire depth and height of the counter. Linking system shall eliminate top, front and rear horizontal and vertical gaps between equipment. Linking system to be open to allow mechanical connections to run through adjoining counters without having to cut access holes, reducing the number of building mechanicals required to connect equipment.



Due to continuing product improvement, units and specifications are subject to change without notice.

MULTITERIA • 1444 N. FARNSWORTH AVENUE, SUITE 203 • AURORA, IL 60505
OFFICE: 630-585-1369 • FAX: 630-585-1397 • WWW.MULTITERIAUSA.COM