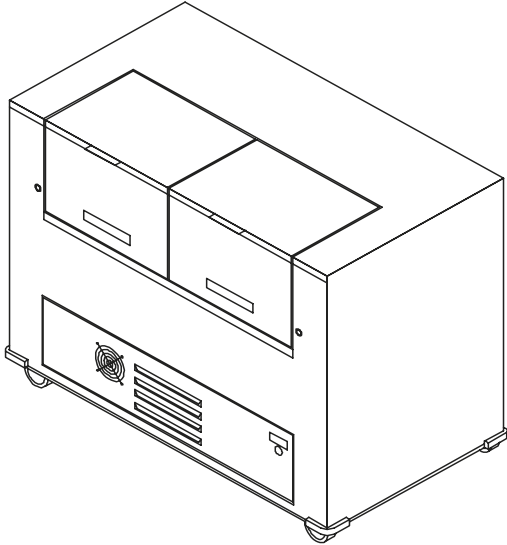


OPEN-FRONT FORCED AIR MILK COOLER**X-STREAMLINE™****MODELS**

- OFMCX-38**
- OFMCX-57**
- OFMCX-72**

- ▶ **3 standard sizes** Available
- ▶ **Heavy duty, 14 gauge stainless steel countertops standard.**
- ▶ **Corner bumpers (standard)**
- ▶ Stainless steel or laminated exterior body panels
- ▶ Accommodates standard 13 x 13 milk crates reducing service handling.
- ▶ Blower system improves air circulation guaranteeing consistent temperature throughout unit.
- ▶ Angle frame and heavy duty stainless steel construction ensures years of dependable service.
- ▶ Lightweight insulated dual door allows half of the unit to remain closed during operation, helping to maintain proper temperatures.
- ▶ Easy to clean, 1/4" tempered glass food shields eliminates scratching and cloudiness
- ▶ 6" heavy duty casters with brakes standard
- ▶ Leveling CAM locks at top corners
- ▶ 8'-0" cord and plug (standard)

Item #: _____ Quantity: _____

Project: _____

OPTIONS & ACCESSORIES**Body Exterior**

- Stainless steel (standard)
- Laminated exterior body panels. Specify: _____

Tray Slide Options

- 12" stainless steel "V" ridge tray slide
- 12" flat stainless steel tray slide
- Solid surface tray slide. Specify: _____

Additional Options

- Fold-down shelf
 - rear mounted
 - side mounted
- Daisy Chain for wiring multiple units together
- Wraparound bumper (add 2" to overall size)

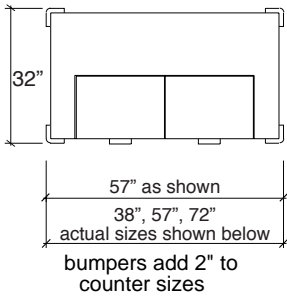




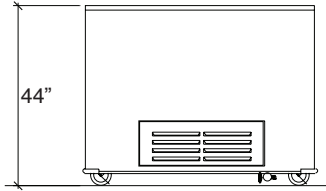
X-STREAMLINE™

OPEN-FRONT FORCED AIR MILK COOLER

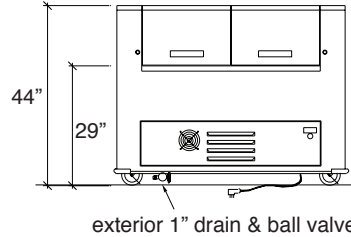
Item #: _____



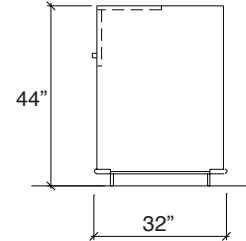
Plan View ↑



Front Elevation ↑



Rear Elevation ↑



End View ↑

| Model | 32" Width X Length | 13 x 13 crates | | 13 x 19 crates | | HP | Volts | AMPS | Approx. weight |
|------------|--------------------|----------------|----------|----------------|----------|-----|-------|------|----------------|
| | | No. of Crates | Capacity | No. of Crates | Capacity | | | | |
| ☐ OFMCX-38 | 38 1/2" | 8 | 384 | 4 | 288 | 1/3 | 120 | 9.6 | 325 lbs |
| ☐ OFMCX-57 | 57 1/2" | 12 | 576 | 6 | 432 | 1/3 | 120 | 9.6 | 400 lbs |
| ☐ OFMCX-72 | 72" | 16 | 768 | 8 | 576 | 1/2 | 120 | 11.8 | 475 lbs |

**Mechanical requirements may change depending on options chosen.

Specifications: Short Form

Provide Multiteria Model # _____ to be constructed with 14 gauge, heavy duty welded stainless steel top. Counter top to be manufactured with 14 gauge stainless steel square turndown on all sides and corners fully welded, ground and polished. The body to be 18 gauge stainless steel unitized construction with overlapping corners welded in place. The front panel shall be easily removable and replaceable allowing front service access. Storage compartment comes standard with unit. Unit is mounted on 6" ball bearing swivel type casters with brakes on all wheels. All units to be provided with 8' long cord and plug standard.

Specifications: Detailed

Counter body is a combination of angled frame and unitized type construction and is of 18 gauge stainless steel with overlapping corners welded in place. Body is reinforced with 12 gauge vertical galvanized steel channel supports.

Counter Top and Doors:

Top to be 32" wide and fabricated from a minimum of 14 gauge stainless steel with square turndown on all sides and corners fully welded, ground and polished. Top to have #4 satin finish and all edges having #7 highlight finish. The opening shall have a full positive door seal. Divided doors to be bi-folding, made of ABS plastic, fully insulated, with PVC hinge.

Refrigerated cabinet:

Refrigerated cabinet shall have a type 304 stainless steel exterior and a water tight stainless steel interior liner, fully insulated with urethane. To have interior 1" drain extended below to a shut-off valve.

Refrigeration system:

A temperature of 38 degrees F shall be maintained by finned tube forced air coil(s) with an accessible thermostatic expansion valve connected to a fully hermetic condensing unit operating on R-134A refrigerant with condensate evaporator. To include all necessary controls for proper operation, and removable stainless steel louvered panels on the front and rear of cabinet to provide necessary ventilation.

Casters:

Counter is mounted on 6" diameter, ball bearing and swivel type casters to be non-marking and with brakes on all wheels. Casters to be mounted through two 12 gauge channels for extra rigidity.



Due to continuing product improvement, units and specifications are subject to change without notice.

(3/2010)