

# MODULAR CASHIER COUNTER

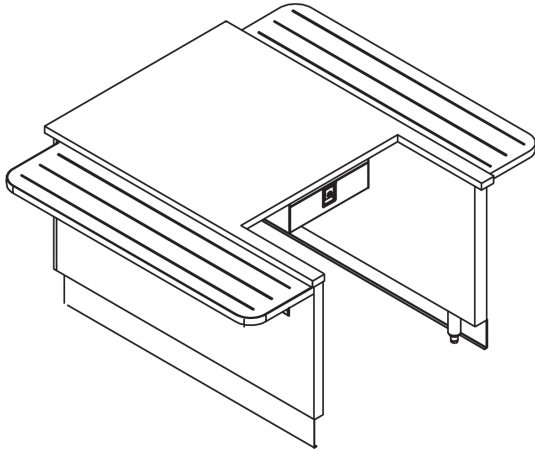


Item #: \_\_\_\_\_ Quantity: \_\_\_\_\_

Project: \_\_\_\_\_

*Create a custom look with  
unique interlocking modules*

## Essence™ Series



Shown with optional toe base and tray slide.

### MODELS

- CS30**
- CS36**
- CS66**

### OPTIONS & ACCESSORIES

#### Counter Heights

- 34" high (standard)
- Available between 30" to 36"  
specify height: \_\_\_\_\_

#### Countertop Material

- 14-gauge 300 series stainless steel (standard)
- Zodiac® quartz
- Corian® solid surface
- Green 100% recycled composite
- Laminate
- Common tops available up to 18'-0"  
(consult factory)

#### Exterior Panels

- Laminate panels (standard)  
specify mfg./color
- Stainless steel panels
- Custom decorative laminate  
(contact factory)

#### Tray Slide Options

- "V" ridge stainless steel
- Flat stainless steel
- Laminate with plastic runners
- Zodiac® quartz
- Corian® solid surface
- Stainless steel runners
- Continuous top extension (in lieu of tray rails)
- Green 100% recycled composite with stainless  
steel runners

#### Kickplate & Casters

- 6" adjustable stainless steel legs (standard)
- 5" casters
- 6" adjustable height NSF casters
- Black powder coated kickplate
- Stainless kickplate

#### Under Counter Options

- Locking Cash Drawer
- Pull out intermediate shelf on drawer slides
- Locked door(s) with louvers

#### Electrical Options

- Duplex outlet, flush
- Duplex outlet, pedestal

#### Signage Package

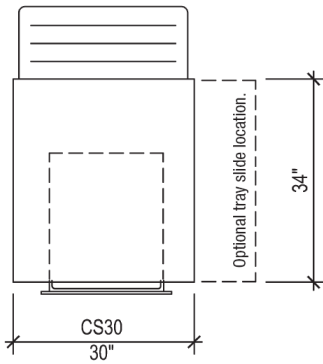
- Counter mounted
- Floor model
- Ceiling/wall mounted  
Other: \_\_\_\_\_  
(consult factory for sign options)

- ▶ **3 standard sizes available**
- ▶ **TIGHT LINK™ (patented)** interlocking mechanism eliminates vertical and horizontal gaps between counters.
- ▶ Durable, welded 300 series stainless steel tubular frame.
- ▶ Interchangeable exterior panels match or complement any décor.
- ▶ Interchangeable top configurations available.
- ▶ Stainless steel undershelf standard.
- ▶ Available in three counter applications: in-line, free-standing single operator and free-standing double operator
- ▶ Free-standing models feature tray slides available on both sides or on one side.

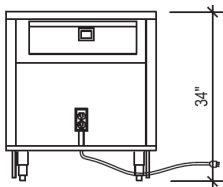
# MODULAR CASHIER COUNTER



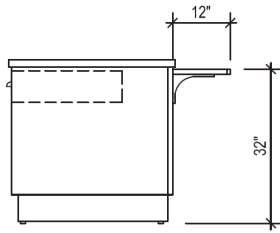
Item #: \_\_\_\_\_



Plan View ▲



Elevation View ▲



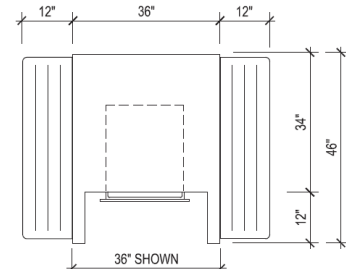
End View ▲

## In-line model CS30

Shown with optional toe base and tray rail.

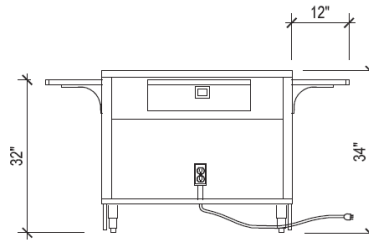
## Free-standing models CS36 & CS66

Shown with optional toe base tray slide, and duplex outlet.

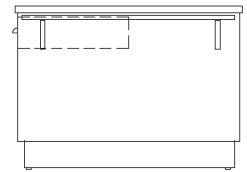


66" available

Plan View ▲



Elevation View ▲



End View ▲

Model	Dimensions L x W x H	Counter Length	Operator	Tray Rails	Cash Drawers	Electric
CS30	30"x34"x34"	30"	1	1	1	120V, 1 phase, 20 amp D.C.O.
CS36	36"x34"x34"	36"	1	2	1	120 V, 1 phase, 20 amp D.C.O.
CS66	66"x34"x34"	66"	2	2	2	120 V, 1 phase, 20 amp D.C.O.

\*\*Mechanical requirements may change depending on options chosen.

### Specifications: Short Form

Provide Multiteria model #CS\_\_\_\_\_ to be constructed with heavy-duty welded stainless steel tubular frame. Counter-top to be manufactured with 14-gauge, 300 series stainless steel with 1-1/2" top turndown. All welds to be ground and polished to provide #4 finish. Counter to have easily removable 3/4" laminated front and end panels. All millwork panels to have standard plastic laminate on front and white laminate interior.

### Specifications: Detailed

**Body Frame:** Body to be welded and polished, 1" stainless steel tubular framework. Body frame made to readily accept 3/4" laminated panels to allow panel changing without the use of tools. Body frame made to accept TIGHT LINK™ (patented) fastening system. Base to be furnished with removable stainless steel undershelf. Undershelf depth to allow 4" clear open space for mechanical connections during installation. Unit shall rest on 6" high stainless steel legs with stainless steel adjustable feet or casters.

**Front & End Décor panels:** All millwork panels to have standard plastic laminate on front and white laminate interior. Panels shall be removable for access for service. Millwork end panels shall be removable without the use of tools. Door handle to be satin chrome finish.

**Countertop:** Top shall be 14-gauge, 300 series stainless steel with 1-1/2" top turndown, and shall be removable to allow for service. Top shall include stainless steel support channels and shall be constructed to accommodate remodeling of the counter at a later date to accept an alternate material top without changing the work height.

### TIGHT LINK™ (patented)

Furnish with linking system that links adjacent counters together the entire depth and height of the counter. Linking system shall eliminate top, front and rear horizontal and vertical gaps between equipment. Linking system to be open to allow mechanical connections to run through adjoining counters without having to cut access holes, reducing the number of building mechanicals required to connect equipment.



Due to continuing product improvement, units and specifications are subject to change without notice.

MULTITERIA • 1444 N. FARNSWORTH AVENUE, SUITE 203 • AURORA, IL 60505  
OFFICE: 630-585-1369 • FAX: 630-585-1397 • WWW.MULTITERIAUSA.COM