

MODULAR GOLD FOOD COUNTER



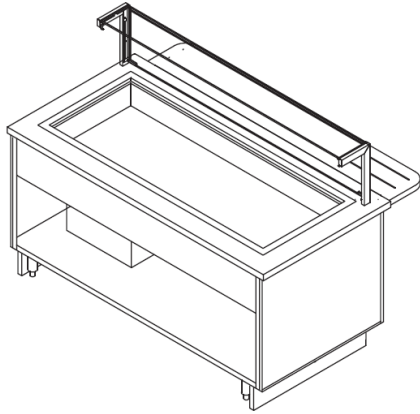
Item #: _____ Quantity: _____

Project: _____

*Create a custom look with
unique interlocking modules!*

OPTIONS & ACCESSORIES

Essence™ Series



Shown with optional food shield, toe base and tray slide.

MODELS

- | | | |
|---------------------------------------|---------------------------------------|---------------------------------------|
| <input type="checkbox"/> CLS30 | <input type="checkbox"/> CLS54 | <input type="checkbox"/> CLS78 |
| <input type="checkbox"/> CLS36 | <input type="checkbox"/> CLS60 | <input type="checkbox"/> CLS84 |
| <input type="checkbox"/> CLS42 | <input type="checkbox"/> CLS66 | <input type="checkbox"/> CLS90 |
| <input type="checkbox"/> CLS48 | <input type="checkbox"/> CLS72 | <input type="checkbox"/> CLS96 |

- ▶ **12 standard sizes available**
- ▶ **TIGHT LINK™ (patented)** interlocking mechanism eliminates vertical and horizontal gaps between counters.
- ▶ Durable, welded, 300 series stainless steel tubular frame.
- ▶ Available in 1 - 6 cold food pan models.
- ▶ Cold pans exceed NSF 7 with pans **FLUSH** with top.
- ▶ Interchangeable exterior panels match or complement any décor.
- ▶ Common tops available up to 18'-0".
- ▶ All food shields 3/8" tempered glass panels to maximize merchandising.
- ▶ Interchangeable top configurations available.
- ▶ 8' cord and plug.

Counter Heights

- 34" high (standard)
- Available between 30" to 36" specify height: _____

Service Type

- Operator Service
- Self service
- Two sided (island/buffet)

Countertop Material

- 14-gauge, 300 series stainless steel (standard)
- Zodiaq® quartz
- Corian® solid surface
- Green 100% recycled composite
- Laminate
- Common tops available up to 18'-0" (call factory)

Exterior Panels

- Laminate panels (standard) specify mfg./color
- Stainless steel panels
- Custom decorative laminate

Tray Slide Options

- "V" ridge stainless steel
- Flat stainless steel
- Laminate with plastic tray runners and vinyl edges
- Zodiaq® quartz
- Corian® solid surface
- Stainless steel runners
- Continuous top extension (in lieu of tray rails)
- Green 100% recycled composite with stainless steel runners

Kickplate & Casters

- 6" adjustable stainless steel legs (standard)
- 6" casters
- 6" adjustable height NSF casters
- Black powder coated kickplate
- Stainless kickplate

Cold Pans

- NSF 7 drop-in self-contained cold pan with pans sitting flush with countertop (standard)
- _____ # of pan openings
- NSF 7 drop-in self contained cold pan with 3" pan recess
- Insulated ice cooled cold pan
- Frost top
- Other, specify: _____

Food Protector Style

- FS (Standard)
- VG Captur™
- M
- Other (Specify) _____

Display Shelves

- Single tier glass display shelf
- 2-tier glass display shelf

Food Protector Options

- Black powder coat finish (standard)
- Stainless steel
- Other powder coat finish_(verify) R.A.L. color
- LED lights
- Fluorescent lights

Operator Work Ledge

- White poly carving board on fixed brackets
- White poly carving board with fold-down brackets
- Stainless steel 8" work ledge with fold-down brackets

Under Counter Options

- Removable undershelf (standard)
- Enclosed undershelf
- Stainless steel storage compartment
- Pan slides
- Hinged doors
- Locks (for hinged doors)
- Refrigerated base

Additional Options

- Tray dispenser
- Plate dispenser
- Stainless steel overshelf
- Grommet holes for power/cords/utility services
- Bread storage well
- Beverage drip trough
- Other, specify: _____

Electrical Options

- Duplex outlet, flush
- Duplex outlet, pedestal
- Daisy chain for wiring multiple units together
- Electrical load center
- Other, specify: _____

Plumbing Options

- 3/4" drain (standard)
- Bottom exit with ball valve
- Bottom exit with hose bib

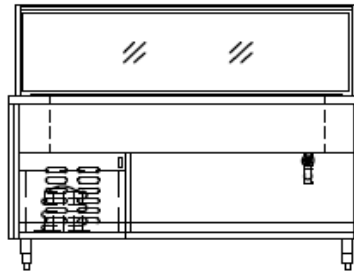
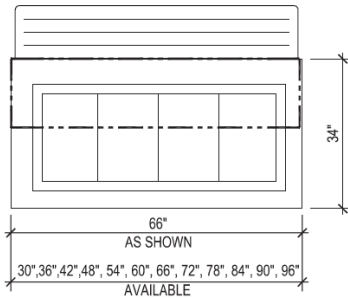
Signage Package

- Counter mounted
- Floor model
- Ceiling/wall mounted
- Other: _____
(consult factory for sign options)

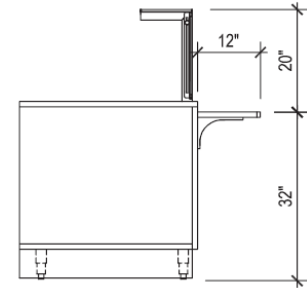
MODULAR COLD FOOD COUNTER



Item #: _____



Shown with optional food shield and tray slide.



Plan View ▲

Elevation View ▲

End View ▲

Model	Dimensions L x W x H	Number of pans in top		Electrical (standard 115V, 1 phase)			Plumbing Requirements
		Available	Std.	H.P.	Amps	NEMA	
CLS30	30"x34"x34"	1	1	1/3	7.6	5-15P	3/4" waste
CLS36	36"x34"x34"	1,2	2	1/3	7.6	5-15P	3/4" waste
CLS42	42"x34"x34"	1,2	2	1/3	7.6	5-15P	3/4" waste
CLS48	48"x34"x34"	1,2,3	3	1/3	7.6	5-15P	3/4" waste
CLS54	54"x34"x34"	1,2,3	3	1/3	7.6	5-15P	3/4" waste
CLS60	60"x34"x34"	1,2,3,4	4	1/3	8.5	5-15P	3/4" waste
CLS66	66"x34"x34"	1,2,3,4	4	1/3	8.5	5-15P	3/4" waste
CLS72	72"x34"x34"	1,2,3,4,5	5	1/3	8.5	5-15P	3/4" waste
CLS78	78"x34"x34"	1,2,3,4,5	5	1/3	8.5	5-15P	3/4" waste
CLS84	84"x34"x34"	1,2,3,4,5	5	1/3	8.5	5-15P	3/4" waste
CLS90	90"x34"x34"	1,2,3,4,5,6	6	1/2	12.0	5-15P	3/4" waste
CLS96	96"x34"x34"	1,2,3,4,5,6	6	1/2	12.0	5-15P	3/4" waste

Mechanical requirements may change depending on options chosen.

Specifications: Short Form

Provide Multiteria Model #CLS_____ to be constructed with heavy-duty welded stainless steel tubular frame. Countertop to be manufactured with 14-gauge, 300 series stainless steel with 1-1/2" top turndown. All welds to be ground and polished to provide #4 finish. Counter to have easily removable 3/4" laminated front and end panels. All millwork panels to have standard plastic laminate on front and white laminate interior. Counter to have _____ (number of) cold pan openings.

Specifications: Detailed

Body Frame: Body to be welded and polished, 1" stainless steel tubular framework. Body frame made to readily accept 3/4" laminated panels to allow panel changing without the use of tools. Body frame made to accept TIGHT LINK™ (patented) fastening system. Base to be furnished with removable stainless steel undershelf. Undershelf depth to allow 4" clear open space for mechanical connections during installation. Unit shall rest on 6" high stainless steel legs with stainless steel adjustable feet.

Front & End Décor panels: All millwork panels to have standard plastic laminate on front and white laminate interior. Panels shall be removable for access for service. Millwork end panels shall be removable without the use of tools. Door handle to be satin chrome finish.

Countertop: Top shall be 14-gauge, 300 series stainless steel with 1-1/2" top turndown, and shall be removable to allow for service. Top shall include stainless steel support channels and shall be constructed to accommodate remodeling of the counter at a later date to accept an alternate material top without changing the work height.

Refrigerated Cold Pan: Cold pan to be 18-gauge stainless steel, fully welded construction with 1/4" coved corners. The cold pan shall be pitched to a 3/4" drain with screen, which is extended to a ball valve below the base. All cold pans shall be furnished with urethane insulation on bottom and all

four sides of pan. The pan shall be fully separated from the countertop by a full-perimeter breaker strip. Cold pan to accommodate full steam table pan 6" deep. Temperature is maintained by a static air system utilizing 1/2" copper coils attached to the liner bottom and sides to a level 1" above the food pans. Cold pan shall be 9" deep and include a patented forced air refrigeration system (hermetic) with built in condensate evaporator. Cold pan includes low velocity fans and an advanced cold wall design operation on R-507 refrigerant. **Cold pan will meet or exceed NSF 7 standards while allowing food pans to sit flush to the countertop.**

TIGHT LINK™ (patented)

Furnish with linking system that links adjacent counters together the entire depth and height of the counter. Linking system shall eliminate top, front and rear horizontal and vertical gaps between equipment. Linking system to be open to allow mechanical connections to run through adjoining counters without having to cut access holes, reducing the number of building mechanicals required to connect equipment.

Due to continuing product improvement, units and specifications are subject to change without notice.

MULTITERIA • 1444 N. FARNSWORTH AVENUE, SUITE 203 • AURORA, IL 60505
OFFICE: 630-585-1369 • FAX: 630-585-1397 • WWW.MULTITERIAUSA.COM

